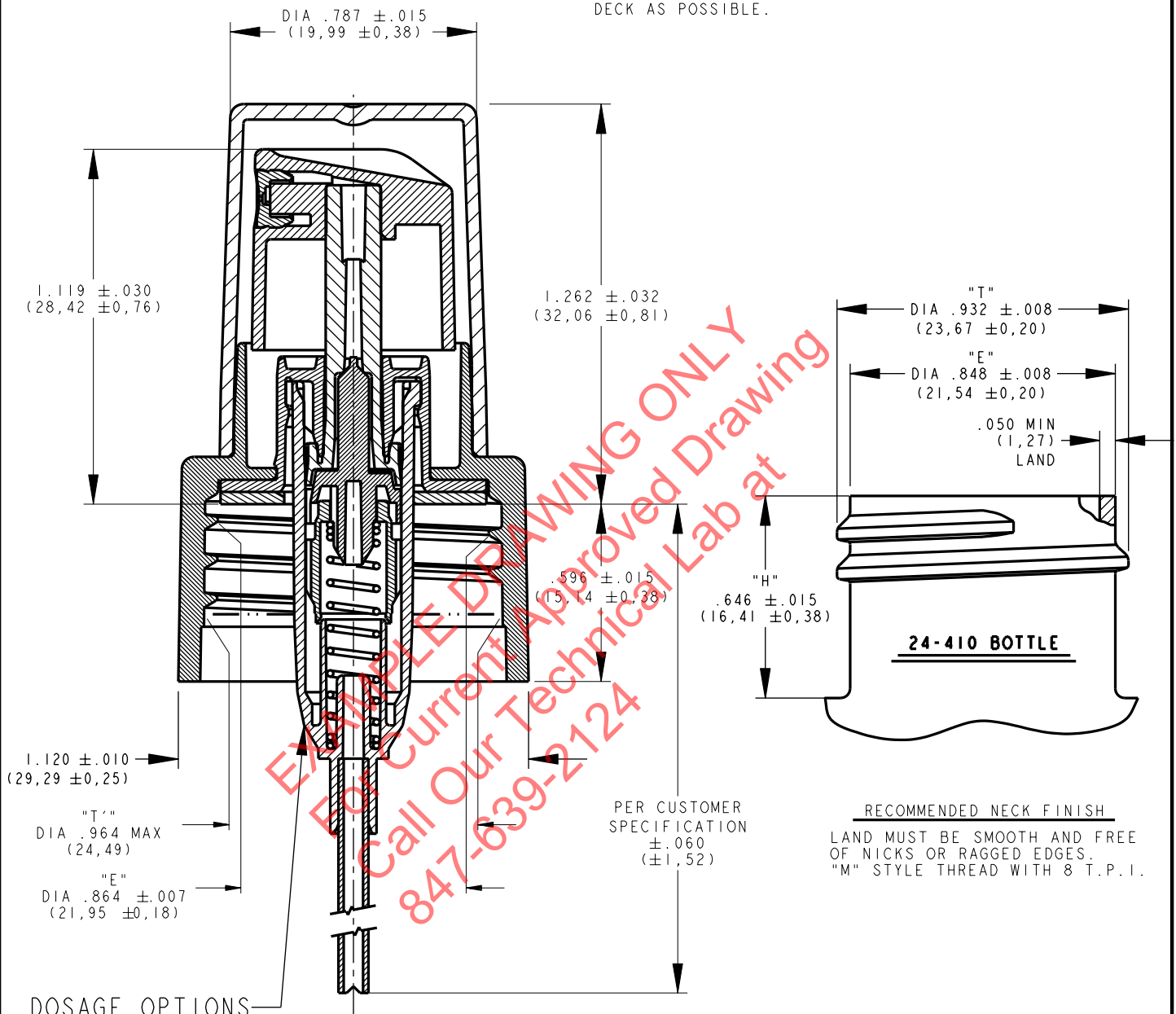


CLOSURE NOTES:

1. APPLICATION TORQUE: 10-18 IN. LBS.
2. THE "T" & "E" DIAMETERS ARE THE AVERAGE OF 2 MEASUREMENTS TAKEN APPROXIMATELY 90° APART.
3. THE "T" DIAMETER IS TAKEN TOWARD THE BOTTOM OF THE CLOSURE JUST BELOW THE START OF THE FULL THREAD.
4. THE "E" DIAMETER IS TAKEN AS CLOSE TO THE INSIDE DECK AS POSSIBLE.



DOSAGE OPTIONS

- .160cc - PURPLE TINT BODY
- .140cc - ORANGE TINT BODY

- 1 DIMENSIONS IN BRACKETS ARE IN MILLIMETERS
- 2 TOLERANCE FOR ORIFICES LESS THAN .060" [1.52 MM] DIA.: ±.002" [0.05 MM]
- 3 ALL OTHER TOLERANCES ±.005" [0.13 MM] UNLESS OTHERWISE SPECIFIED

POSSESSION OF THIS DRAWING IS AN ACKNOWLEDGEMENT THAT IT AND ITS CONTENTS ARE THE EXCLUSIVE PROPERTY OF SEAQUIST. THE ARTICLE SHOWN ON THIS DRAWING OR THE DRAWING MAY NOT BE REPRODUCED IN ANY FORM WHATSOEVER WITHOUT WRITTEN PERMISSION FROM SEAQUIST.

Title <b>OPTIMA 24-410 SMOOTH WALL</b>				<b>SeaquistPerfect</b> DISPENSING	Approved	Date			
Drawn By	DM/KS	Date	28-Feb-00		Chkd By	RC	Date	28-Feb-00	Qual Mgt
Material	-	Scale	2:1	Dwg No.	CSX-0025-024	Lab Mgr		R & D	
						Rev Ltr	-		