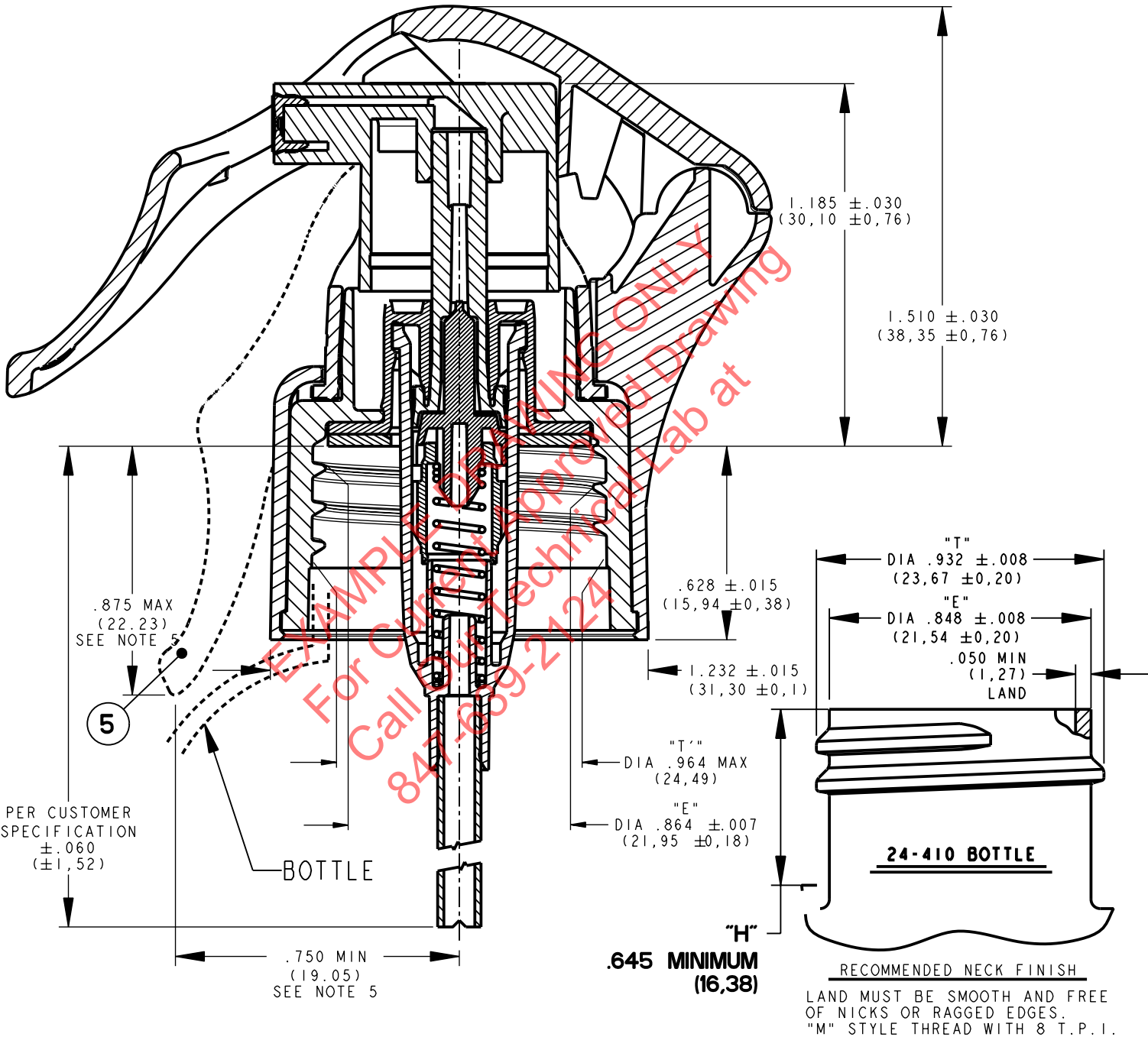


UNIQUE BOTTLE REQUIREMENTS

CLOSURE NOTES:

1. APPLICATION TORQUE: 10-18 IN. LBS.
2. THE "T" & "E" DIAMETERS ARE THE AVERAGE OF 2 MEASUREMENTS TAKEN APPROXIMATELY 90° APART.
3. THE "T" DIAMETER IS TAKEN TOWARD THE BOTTOM OF THE CLOSURE JUST BELOW THE START OF THE FULL THREAD.
4. THE "E" DIAMETER IS TAKEN AS CLOSE TO THE INSIDE DECK AS POSSIBLE.
5. **IMPORTANT NOTE: BOTTLE SHOULDER MUST PROVIDE CLEARANCE FOR TRIGGER IN FULLY ACTUATED POSITION TO ENSURE PROPER PUMP FUNCTION.**
6. **BOTTLES BELOW THE .645 MINIMUM "H" HEIGHT NEED TO BE VERIFIED BY SEAQUISTPERFECT**



- 1 DIMENSIONS IN BRACKETS ARE IN MILLIMETERS
- 2 TOLERANCE FOR ORIFICES LESS THAN .060" [1,52 MM] DIA.: ±.002" [0,05 MM]
- 3 ALL OTHER TOLERANCES ±.005" [0,13 MM] UNLESS OTHERWISE SPECIFIED

POSSESSION OF THIS DRAWING IS AN ACKNOWLEDGEMENT THAT IT AND ITS CONTENTS ARE THE EXCLUSIVE PROPERTY OF SEAQUIST. THE ARTICLE SHOWN ON THIS DRAWING OR THE DRAWING MAY NOT BE REPRODUCED IN ANY FORM WHATSOEVER WITHOUT WRITTEN PERMISSION FROM SEAQUIST.

Title JAZZ TRIGGER ASSEMBLY			
Drawn By JAK	Date 29-Mar-05	Chkd By PJW	Date 29-Mar-05
Material -	Scale 2:1	Dwg No. CSX-JAZZ-024	

SeaquistPerfect
— DISPENSING —

Approved	Date
Qual Mgt	
R & D	
Lab Mgr	
Rev Ltr	D